

Welcome to Year 4

2021-2022

In today's meeting, the following areas will be covered:

- Year 4 staff
- Homework, PE and uniform
- School values and expectations
- Multiplication tables check
- How you can support your child

The Year 4 Team

- ▶ **Miss McMenemy (Year Team Leader) – Marie Curie**
- ▶ **Ms. Gray (English Lead) – Nikola Tesla**
- ▶ **Mrs Golley (Lower Key Stage 2 Vice Principal) – Charles Darwin**
- ▶ **HTLA – Mrs J. Bhambra**
- ▶ **HLTA and EAL support – Mrs Ahluwalia**
- ▶ **1:1 support – Mrs Gulled, Mrs Siddiqa and Mrs Mirashi**

High Expectations



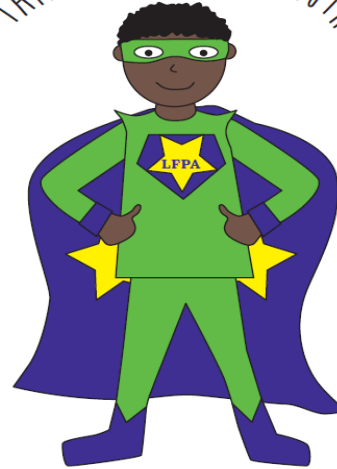
- ▶ Responsibility - children must take responsibility for their learning, homework and ensuring they are fully prepared for learning.
- ▶ Behaviour - We follow our LFPA Superheroes.
- ▶ Punctuality - coming to school on time - Doors open at 08:45 am and close at 09:00. 15:20 doors open for home time
- ▶ Attendance - making sure your child is here every day, if not this should be communicated with the school office and class teacher.
- ▶ Quality of Work - Homework will be assigned weekly; this will mostly be online. If your child does not have access at home (please let your child's teacher know) they will be able to attend a homework club.
- ▶ Uniform - Neatness and Presentation (PE kit and School uniform). Please label all of them.
- ▶ Reading for pleasure - daily.
- ▶ Accelerated reader books - changed weekly and children will quiz only at school.
- ▶ Spellings - practice each week for a test on a Wednesday.
- ▶ Times tables - must practise every day. We complete quizzes every day in school.

Our School Principles

REYNA SHOWS RESPECT



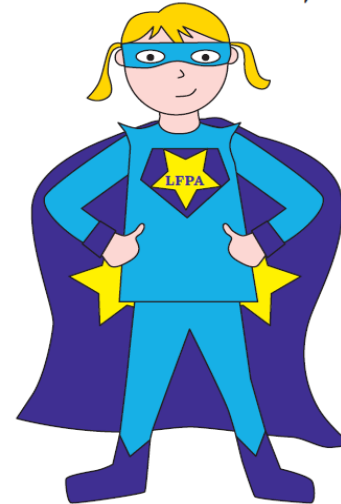
TANAAD TELLS THE TRUTH



AAFRIN AIMS HIGH



ROLE MODEL MEGAN



Procedures for Contacting Staff

- ▶ First point of call: for quick messages teachers will be at each class door at 15:20.
- ▶ Parent Request: if you wish to speak confidentially to the class teacher over a concern relating to your child, please put it in writing and the teacher will arrange to meet with you at a convenient time if necessary. This might be before school or after school when all the children have been dismissed.
- ▶ For the safety of all children, parents are expected to stand back away from the classroom when picking up children.

Communication

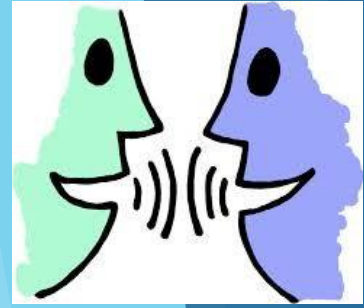
School Website/APP: The website and APP will be updated with: events, dates, clubs, curriculum, forms and class information.

Parents Evenings: Take place in the Autumn and Spring term.

Reports: Report at end of Summer term final report.

Newsletter: Newsletters will be updated every month with information of the children's learning, attendance and upcoming events.

Text Messages: These are sent as reminders and to inform you of information instantly.



The Curriculum

Maths- White Rose Scheme	Computing- Rising Stars Scheme of work	Science	Topic	Music	R.E- Jigsaw Scheme of work	P.E.
Place Value and the number system Addition and subtraction	Creating games	In a State!	Castles Why were castles necessary?	Composers	Is it possible for everyone to be happy? (Buddhism)	Fitness (Swimming)
Multiplication and Division	We Are Toy Designers	Who am I?	Monarchs though the ages Does the monarchy have a future? TRIP: Windsor Castle	Composers	What is the most significant part of the Nativity story for Christians today?	Football
Measures and data	Digital Music Production	Human Impact	Dangerous planet Natural disasters What lies beneath our feet?	Composers	Could the Buddha's teachings make the world a better place?	Hockey
Decimals and fractions Shape	Data Analysis	Where does all my food go?	How did the Vikings change Britain?	Composers	Is forgiveness always possible for Christians?	Volleyball
Addition and subtraction Decimals and fractions	HTML Editing	Switched on!	Egyptians What makes Ancient Egypt a wonder of the world?	Composers	What is the best way for Jewish people to Show commitment to God?	Athletics

Maths

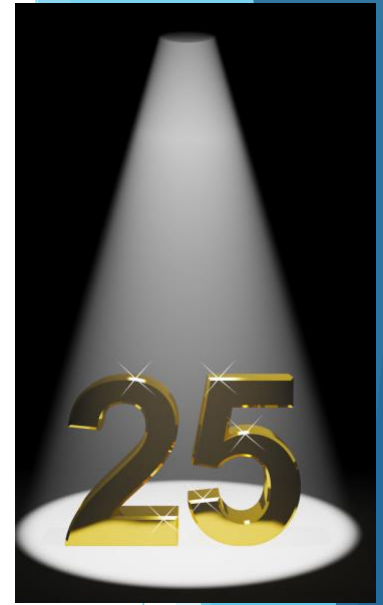
The Multiplication Tables

Check (M.T.C.)

The Multiplication Tables Check (MTC) is a key stage 2 assessment to be taken by pupils at the end of year 4 (in June). From the 2019 / 2020 academic year onwards. The purpose of the MTC is to make sure the times tables knowledge is at the expected level. The MTC is an online test where the pupils are asked 25 questions on times tables 2 to 12.

We will complete daily checks out of 25.

We use Mathsframe which is a resource you can use at home. <https://mathsframe.co.uk/>



If a child gets 25
two days running
they are able to
join the 25 club
and be awarded a
badge but a child
can leave the 25
club if their results
start to decline.

Reading at home

- ▶ Your child has question prompts in their reading record to support them at home. When you read with your child, use these as these are the types of questioning we do daily in school.
- ▶ 3 entries a week in your child's Reading Record. Your child should write new vocabulary in their book or a fun fact they've learned or something that has surprised them about the book. They could even write a question for the teacher to answer.
- ▶ If you can sign the book that is excellent but the expectation in Year 4 is that the children start taking responsibility for their own learning.
- ▶ From the end of this week, your child will have 2 books to take home.

Vocabulary Questions with Victor

- What does this word/phrase/sentence tell you about the character/setting/mood?
- By writing..., what effect has the author created? Do you think they intended to?
- What other words/phrases could the author have used here? Why?
- How has the author made you/this character feel by writing...? Why?



Retrieval Questions with Rex

- Find the... in this text. Is it anywhere else?
- When/where is this story set? Find evidence in the text.
- Find the part of the story that best describes the setting.
- What do you think is happening here? Why?
- Who is telling this story?



Summarising Questions with Sheba

- What is the main point in this paragraph? Is it mentioned anywhere else?
- Sum up what has happened so far in... words/seconds or less.
- Which is the most important point in these paragraphs? Why?
- Do any sections/paragraphs deal with the same themes?



Be an Author with Arlo

- What does the word... tell you about...? How?
- Find two ways that the author tells you...
 - What do you think the author meant by...?

Inference Questions with Iggy

- What do you think... means? Why do you think that? Could it be anything else?
- I think...; do you agree? Why/why not?
- Why do you think the author decided to...?
- Can you explain why...?
- What do these words mean and why do you think that the author chose them?



Prediction Questions with Pip

- Can you think of another story with a similar theme? How do their plots differ?
- Which stories have openings like this? Do you think that this story will develop the same way?
- Why did the author choose this setting? Will that influence the story?



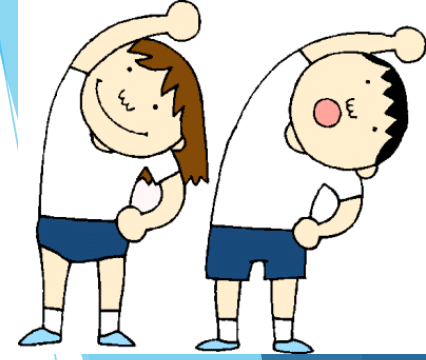
Compare, Contrast and Comment

with Cassie

- What is similar/different about two characters? Did the author intend that?
- Explain why... did that.
- Describe different characters' reactions to the same event.
- Does this story have a moral?
- Which is better and why?
- Which words do you think are most important? Why?
- Which words do you like the most? Why?
 - How has the author made you feel happy/sad angry/frustrated?



P.E



- ▶ PE is on a Monday and Thursday for Marie Curie.
- ▶ P.E.is on a Thursday for Nikola Tesla (2 sessions)
- ▶ P.E. is on a Thursday for Charles Darwin (2 sessions)

- ▶ Please ensure your child comes to school in their full P.E. kit on these days.

- ▶ **Year 4 will take part in swimming lessons weekly. The starting date is to be announced.**

Homelearning

Accelerated reading book - Changed weekly and quiz weekly (it may be longer if your child is reading the longer chapter books.) This is based on their reading age score.

Reading for pleasure book: will be changed weekly. Please read with your child everyday and record this in their reading records. Your child can choose any book of any level of difficulty.

Spelling- Spelling Shed - Spelling words will be available on Spelling Shed on a Friday, strategies will be taught on a Monday and children are tested on the Wednesday. (the spelling test is not just the week's spelling words but topic words, science words and words from previous spelling tests.)

MyOn- Reading- given an individual log in/account. Details to be released shortly.

Safeguarding Children

- ▶ Please ensure you phone if you are running late for pick up.
- ▶ If a child makes a declaration to a member of staff, concerning their safety, we will follow our school procedure and contact the appropriate agencies.

Greet your child with a smile not a mobile phone!



We look forward to the year ahead!

Any Questions?

