

# **Welcome to Mole Class**

2021-2022 Academic Year

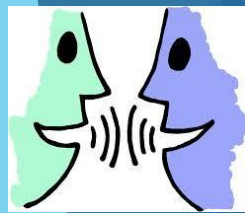
# **Staff**

- ▶ **Miss Woolf- Class Teacher**
- ▶ **Mrs Williams-Support Staff**
- ▶ **Mrs Ijaz-Support Staff**

# Procedures for Contacting Staff

- ▶ First point of call: for quick messages teachers will be at each class door at 8.50.
- ▶ Parent Request: if you wish to speak confidentially to the class teacher over a concern relating to your child, please put it in writing and the teacher will arrange to meet with you at a convenient time if necessary. This might be before school or after school when all the children have been dismissed.
- ▶ For the safety of all children, parents are expected to stand behind the red line when dropping and picking up.

# Communication



**School Website/APP:** The website and APP will be updated with: events, dates, clubs, curriculum, forms and class information.

**Parents Evenings:** Take place in the Autumn and Spring term (*Dates posted on the online calendar PLEASE NOTE Extra Curricular Clubs except After School Club do NOT run on these evenings to allow all staff to sufficiently prepare*).

**Letters:** regarding trips of events will be sent to parents on a half termly basis.

**Reports:** Report at end of Summer term final report.

**Newsletter:** Newsletters will be updated every month with information of the children's learning, attendance and upcoming events.

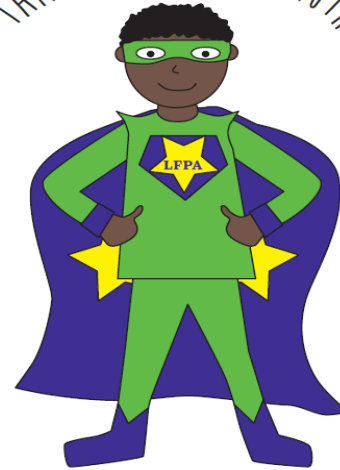
**Text Messages:** These are sent as reminders and to inform you of information instantly.

# Our School Principles

REYNA SHOWS RESPECT



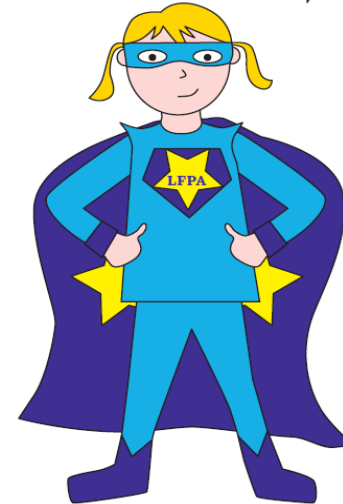
TANAAD TELLS THE TRUTH



AAFRIN AIMS HIGH



ROLE MODEL MEGAN



# Behaviour

- Rewards are given in reference to the LFP Way - respect, aiming high, telling the truth, role model
- If your child comes home with a sticker, certificate or verbal praise from the teachers, please ask them what they got it for. **It's important that we acknowledge these successes.**
- If children make negative choices, they will move down through zones- zone 1, 2 or 3.
- All children will be allocated houses and their positive behaviour will earn them house points

# High Expectations



- ▶ Behaviour - We follow our LFPA Superheroes.
- ▶ Punctuality - coming to school on time- Doors open at 8:50 am and closes at 8:55 am. 3:15 doors open for home time
- ▶ Attendance - making sure your child is here every day, if not this should be communicated with the school office and class teacher.
- ▶ Quality of Work-Homework, pencils only.
- ▶ Uniform - Neatness and Presentation (PE kit and School uniform). Please label all of them.
- ▶ Reading - everyday and books updated on bug club.
- ▶ Spellings - practice each week for a test on Friday.

# Uniform!

- Grey/black skirt, shorts or trousers
- Purple school jumper or cardigan
- Plain white shirt or polo shirt
- Smart black shoes not trainers
- No brightly coloured tights, socks or hair accessories



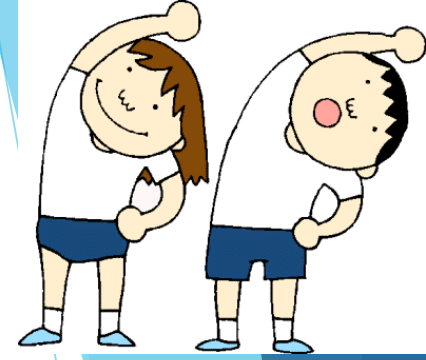
# PE Kit:

Children need a full change of clothes:

- T-shirt
- Sweatshirt
- Shorts
- Tracksuit bottoms
- Socks
- Plimsolls

# P.E

▶ PE is on a Monday and Thursday



▶ Please ensure your child comes to school in the correct PE kit

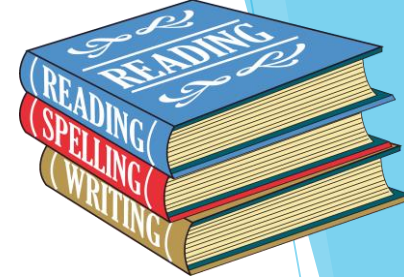
▶ Children who do not have the correct PE kit might not be allowed to take part in PE for safety reasons.

▶ Focus of fundamental movement skills, team games, sports and dance.

# Independence:

- Please may we remind parents to say goodbye to their children outside their classrooms and not bring them into the building. This will help to encourage independence.
- Please ensure children are carrying their own belongings into school to help them develop their independence in looking after their belongings.

# The Curriculum



## Structure of the day:

Examples of activities for reflection time:

- Big feelings small feelings
- Talking about values
- Positive shout out to each other- This should be used as an opportunity to improve children's grammar, verbal expression and intellect debate, based on explicit school values and motto, 5 B's-Explicitly using resilience, independence and pride in their learning.

Mole	Monday	Tuesday	Wednesday	Thursday	Friday
8:55 - 9:00	Register/purple pen/First News	Register/purple pen/First News	Register/purple pen/First News	Register/purple pen/First News	Register/purple pen/First News
9:00- 9:30	Reward assembly every other week	Whole class reading skills	Whole class reading skills	Whole class reading skills	Whole class reading skills
9:30-10:20	English	English	English	English	Headstart assessment
10:20-10:35	Break				
10:35 - 11:00	Phonics	Phonics	Phonics	Phonics	Phonics
11:00-12:00	Maths	Maths	Maths	Maths	Headstart maths End of block End of term assessment.
12:00-13:00	Lunch				
Cover			Khadra-NQT	Marcus, Eugene, ICT	
13:00-13:15	Phonics (1M guided reading with all adults) 13:00-13:30)	Phonics (1S guided reading with all adults)	Phonics (1R guided reading with all adults)	PPA (PE, Music, ICT)	Phonics
13:15-13:30	Handwriting	Handwriting	Handwriting		13:15-14:00 PSHE
13:30-15:00	13:30-14:30 Topic-Knowledge base History/Geography  14:30-15:00- KS1 assembly every other week	13:30-14:15 RE  14:15-15:00 PE	Topic-Skills base Art/D&T 13:30-14:30		14:00-14:45 Science
15:00-15:05	Mile a day	Story time	Reflection	Story time	Mile a day
15:05 - 15:15	Story time		Story time		Celebration Assembly in class

# The Curriculum

## English

- ▶ Spelling - Follow NC spelling guidance
- ▶ Spelling- spellings sent home every Friday for a test the following Friday.
- ▶ Whole class reading- activities given based on a specific text.
- ▶ Immersion- text based role play, reading comprehension and summarising.
- ▶ Innovation- a form of showcasing their knowledge and skills developed throughout the week and the unit of work.

# The Curriculum

## Maths

### ▶ Areas covered-

- ▶ Numbers to 100
- ▶ Addition .
- ▶ Subtraction
- ▶ Multiplication
- ▶ Division
- ▶ Measure
- ▶ Fractions
- ▶ Time
- ▶ Money
- ▶ Shapes-2D and 3D
- ▶ Statistics
- ▶ Position and Direction

# The Curriculum

## Science

Areas covered-

- Everyday materials
- Animals including humans
- Senses
- Plants
- Seasons

# The Curriculum

## Topic

- ❖ Areas covered-
- ❖ Superheroes
- ❖ Fairy tales
- ❖ Dinosaurs
- ❖ UK
- ❖ Food
- ❖ Seaside



# Visits and Visitors

- Visits and Visitors are booked in advance related to the topics / areas of curriculum being covered. We will send out letters with details each term for the coming events.

There will be a contribution request for these events.

- Special Weeks: Science week/International week
- Dates for your diary (including trips) will be available on the Calendar on our website.



# Homework

- ▶ **Home Readers:** Books will be changed once a week. They will bring three books home for the week. Please read with your child everyday and record this in their reading records.
- ▶ **Spelling-** Spelling words sent home every Friday to be tested the following Friday.
- ▶ **Online Bug Club-** Reading- given an individual log in/account.
- ▶ **Timetable Rockstar:** Children will receive logins for this platform.
- ▶ 2, 5 and 10.

# Parental Contribution

- ▶ PTA
- ▶ Parent Workshops
- ▶ Volunteers on school trips:

Please be aware that selection of parents for trips is done by picking names from a hat. When you are selected to come on a trip, you will not be put with your child for safety reasons.

# Safeguarding Children

- ▶ Please ensure you phone if you are running late for pick up.
- ▶ If a child makes a declaration to a member of staff, concerning their safety, we will follow our school procedure and contact the appropriate agencies.
- ▶ Please remember there is a no mobile phone policy on our school grounds.

Greet your child with a smile not a mobile phone!



We look forward to the year ahead!

# Any Questions?

